

Addressing the root causes and devastating effects of malnutrition

MANA FOODS RWANDA LTD.

August 2011

Issue No. Nine

www.mananutrition.org



CONTACT:
BRET RAYMOND
bret@mananutrition.org
Kigali, Rwanda

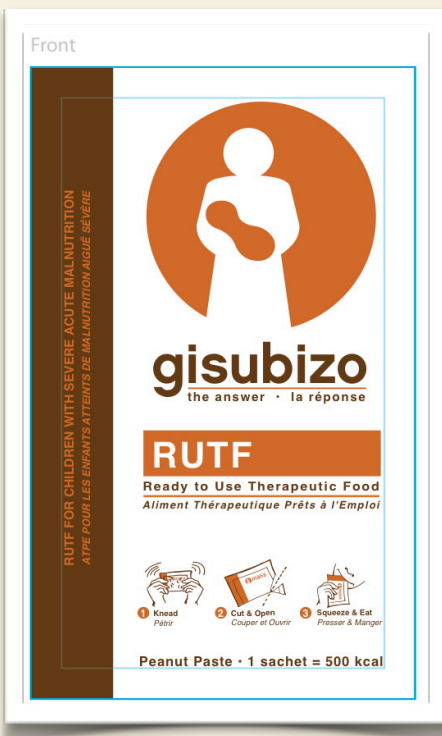
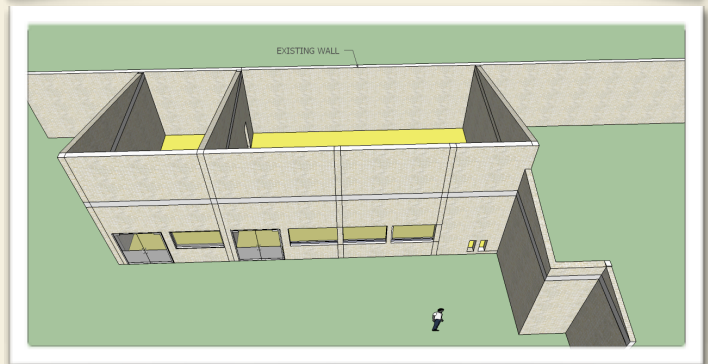
TELEPHONE
+250.78.574.8314

SKYPE
bretraymond

Renovation Update

Our renovation plans are complete, and we are ready to begin the project of transforming the existing warehouse into a food processing facility that meets international food safety standards. We are experiencing a slight delay as we negotiate with our landlord regarding long-term use of the facility, including MANA's intended acquisition of the property. We expect that everything will be resolved very soon and that we'll get to work on the renovations, expected to take approximately three months.

The drawings to the right were put together by a Ugandan construction firm that will be leading much of the work.



It's in the Name

Earlier this year, we conducted an efficacy and acceptability study in northwest Rwanda. Near the conclusion of the study, we asked mothers and community health workers this question: "Now that you've seen what this product does, what would you call it in Kinyarwanda (local language)?" Many ideas were shared, but the one that occurred most often was *gisubizo*, which in Kinyarwanda simply means "the answer." We're using this word in the design for our product packaged in Rwanda, something that we hope will increase acceptance of MANA in Rwanda and the surrounding region where Kinyarwanda is spoken and/or understood.

Equipment

Thanks to several generous people, we received the funding necessary to order the equipment for our entire production line. The production line is scheduled for testing later this month in Seattle. Once validated, the equipment will be cleaned, crated, and shipped to Georgia factory where it will be combined with other supplies required for our Rwanda operations.

Remaining Capital Budget

There are two items in our capital budget that are currently unfunded: Computers/printers (\$15,000) and a company vehicle (\$40,000). The cost of the vehicle appears high due to import taxes (60%) and transport costs, but it's quite normal for a reliable, safe vehicle here. If you are able to help us meet the budget for either of these items, would you please send a check to MANA and write "Rwanda" on the memo line. Thank you!

FOLLOW MANA ON

facebook

YouTube

twitter

DONATE TO MANA RWANDA

Online via PayPal or credit card at www.mananutrition.org (select **Make a One-time Donation to MANA Rwanda**)
By check at PO Box 763, Matthews NC 28106 (please write RWANDA in the memo line)